

Price List

Distributor

March 2014



ALEX Distributors

Alex Taylor Street
PO Box 87, Hawera 4640

Phone 0508 79 79 79
Fax 06 278 1160

Email sales@ALEXnz.com
Website www.ALEXnz.com

E. & O.E.



ALEX Distributors
communicate better with us...

Contents

	<i>Page</i>
Wall-mounted whiteboards	3
- PROWITE™ Porcelain enamel magnetic	3
- WITAX™ Acrylic magnetic	3
Double-sided whiteboards	3
Revolving Projector Screen-Whiteboards	4
Printed whiteboards	4
Folding & Sliding whiteboards and cabinets	4
PROWITE™ Laser-etched whiteboards	5-7
- Standard designs	5,6
- Custom designs	7
PROWITE™ Glass whiteboards	5
Flip Charts & Easels	8
Mobile Whiteboards, single- & double-sided	9
PROWITE Projection™ Screens - wall-mounted, motorised & tripod	10
- pull-up & table screen	11
PROWITE Projection™ - Ceiling mounts & trolley	11
PROWITE™ Interactive whiteboards	11
PROWITE™ Lockable Noticeboards	12
Pin boards/Combination pin boards	13
Corkboards	13
Blackboards	13
Markers & other accessories	14

Accessories & Snowman® markers

Erasers, Magnetic buttons, etc.

Code	Description
SE102	Economy whiteboard eraser
SE189	Magnetic Refillable whiteboard eraser
RS01	Refill felts x 6 for SE189
WCS250	Whiteboard cleaner spray, 250ml
MSPA4	Magnetic Sign Pocket A4, open one end
MB212	Magnet buttons, 12 assorted colours, 2 cm
MB312	Magnet buttons, 12 assorted colours, 3 cm
MPH4	Magnetic acrylic pen holder, white
WSK4	Whiteboard starter kit; 1 x SE189, 1 x MPH4, 2 x MB301 3cm magnets & 4 x Snowman® Boardmarkers



*Images not to scale

Snowman® Markers					Full carton Price (120+ markers)	Part or mixed cartons
Type	Code	Colours	Carton qty. (as applicable)			
			Inner	Carton		
Whiteboard						
	BAP-12	Bullet tip, alcohol-based	4	12	120	
	BGT-12	Chisel tip, alcohol-free	4	12	120	
	BGT-12 SC	" " Specialised Colours	*4	12	120	
	BG-12	Bullet tip, alcohol-free	4	12	120	
	BAPW4	Wallet of 4	4	1	24	
	BG / BGT W4	Wallet of 4	4/4	1	24	
	BGT W8	Wallet of 8	8	1	24	
	BAS-24	Fine-tip	4	24		
Permanent						
	GT-12	Chisel tip	8	12	120	
	G-12	Bullet tip	8	12	120	
	G / GT W4	Wallet of 4	4/4	1	24	
	G / GT W8	Wallet of 8	8	1	24	
	NP	Fine chisel tip	3	12	120	
Highlighter						
	LP10-12	Chisel tip	5	12	120	
	LP10 W4	Wallet of 4	any 4	1	12	
OHP markers - for acetate film						
	OPM-12	Permanent ink	8	12	120	
	OWM-12	Water-soluble ink	6	12	120	
Colours:						
4 = black, blue, red, green		3 = black, blue, red		5 = fluorescent yellow, green, pink, orange, blue		
*4 Specialised Colours = brown, orange, yellow, violet		any 4 = any 4 of above 5 fluorescent colours				
8 = black, blue, red, green, brown, orange, yellow, violet		6 = black, blue, red, green, brown, orange				



Wall Mounted Enamel Whiteboards

PROWITE™ Porcelain Enamel magnetic single-sided whiteboards

Code	Size (mm)
0203PE	200 x 300
0406PE	400 x 600
0606PE	600 x 600
0608PE	600 x 800
0609PE	600 x 900
0612PE	600 x 1200
0909PE	900 x 900
0912PE	900 x 1200
0915PE	900 x 1500
0918PE	900 x 1800
1212PE	1200 x 1200
1215PE	1200 x 1500
1218PE	1200 x 1800
1221PE	1200 x 2100
1224PE	1200 x 2400
1230PE	1200 x 3000
1236PE	1200 x 3600



Wall Mounted Magnetic Whiteboards

WITAX™ Acrylic Magnetic single-sided whiteboards

Code	Size (mm)
AC0203	200 x 300
AC0406	400 x 600
AC0507	500 x 700
AC0609	600 x 900
AC0909	900 x 900
AC0912	900 x 1200
AC0915	900 x 1500
AC0918	900 x 1800
AC1212	1200 x 1200
AC1215	1200 x 1500
AC1218	1200 x 1800
AC1221	1200 x 2100
AC1224	1200 x 2400
AC1236	1200 x 3600

Double-sided Whiteboards

PROWITE™ & WITAX™ double-sided whiteboards only

Code	Size (mm)	Brand
0912PED	900 x 1200	Prowite™ double-sided
1212PED	1200 x 1200	Prowite™ double-sided
1215PED	1200 x 1500	Prowite™ double-sided
1218PED	1200 x 1800	Prowite™ double-sided
AC0912D	900 x 1200	Witax™ double-sided
AC1212D	1200 x 1200	Witax™ double-sided
AC1215D	1200 x 1500	Witax™ double-sided
AC1218D	1200 x 1800	Witax™ double-sided

Please see page 9 for **mobile double-sided boards**.

* All whiteboards come with short pen tray & fixing kit.

FPT	Full length pen tray. Length can be specified	\$ /m
-----	-----------------------------------------------	-------

Revolving Projector Screen-Whiteboards

PROWITE™ one Porcelain Enamel side, one Projection Screen side, Reversible

Code	Size (mm)
R1218PE	1200 x 1800
R1215PE	1200 x 1500

REDUCED TO CLEAR! While stocks last - to be discontinued

Printed whiteboards

A4 Printed handwriting boards

Code	Size (mm)
AC0203WB	20/10mm lines 300 x 217mm

- Lined one side, blank one side

LBP1 Spare marker for writing boards

Folding & sliding whiteboards

PROWITE™ & WITAX™ magnetic single & double sided folding & sliding whiteboards

- Many possible configurations and sizes.

e.g.: 1@ 600 x 900mm Prowite™ wall-mounted + 2@ 450 x 600mm hinged, double-sided Prowite™ whiteboards, 1 folding from each side:

e.g.: 1@ 900 x 1200mm Prowite™ wall-mounted + 2@ 900 x 600mm hinged, single-sided Prowite™ whiteboards, 1 folding from each side:

e.g.: 1@ 1200 x 1800mm WITAX™ wall-mounted + 2@ 900 x 1200mm hinged, double-sided WITAX™ whiteboards, 1 folding from each side:

e.g.: 1@ 1200 x 2400mm PROWITE™ fixed + 2@ 1200 x 1200mm sliding, single-sided PROWITE™ whiteboard, in double aluminium track:

e.g.: 1@ 1200 x 1800mm WITAX™ wall-mounted + 2@ 900 x 1200mm hinged, single-sided WITAX™ whiteboard, in aluminium track:

...and many more combinations available on request.

PROWITE™ cabinet slider units - standard in modules of 1200mm wide

- PROWITE™ whiteboards with 25 year surface guarantee
- made in NZ, custom cabinet colours and sizes available
- can also be made with hinged whiteboard doors

Pin boards / Noticeboards

Pinnable softboard core, aluminium framed

Code	Colour	Size (mm)
PB0609G	Grey	600 x 900
PB0612B	Blue	600 x 1200
PB0612G	Grey	600 x 1200
PB0912B	Blue	900 x 1200
PB0912G	Grey	900 x 1200
PB1212G	Grey	1200 x 1200
PB1218G	Grey	1200 x 1800
PB1224G	Grey	1200 x 2400

Other colours, fabric & size options, framed or wrapped edges, can be made to order.

Combination pin boards

Pinnable softboard core, half whiteboard half pin board, aluminium framed

Code	Colour	Size (mm)
CB0609G	Grey	600 x 900
CB0912B	Blue	900 x 1200
CB0912G	Grey	900 x 1200

Corkboards

Pinnable softboard core, natural cork surface, aluminium framed

Code	Colour	Size (mm)
CK0609	Cork	600 x 900
CK0912	Cork	900 x 1200
CK1212	Cork	1200 x 1200
CK1215	Cork	1200 x 1500
CK1218	Cork	1200 x 1800
CK1224	Cork	1200 x 2400

Self repairing linoleum pinboards available made to order.

Blackboards


Ultra-smooth, impact-resistant matte finish chalk boards, aluminium framed

Code	Colour	Size (mm)
BA0609	Black matt	600 x 900
BA0612	Black matt	600 x 1200
BA0812	Black matt	800 x 1200
BA1212	Black matt	1200 x 1200
BA1224	Black matt	1200 x 2400
Chalk	White or Colours	100pcs/box

*- These are made to order, so please advise your required sizes.
- Some other Colours also available, approx 10% extra.*

Prowite™ Lockable Notice Boards

PROWITE™ Aluminium framed hinged & sliding front Cork boards

Code	Type	Size (mm)	
	CKL0609H	Acrylic Hinged door	600 x 900
CKL0912H	Acrylic Hinged 2 door	900 x 1200	
CKL0918H	Acrylic Hinged 3 door	900 x 1800	
CKL0609S	Glass sliding doors	600 x 900	
CKL0912S	Glass sliding doors	900 x 1200	



NEW!!



Prowite™ Laser-etched Whiteboards

Standard Designs

Code Size (mm)

Staff Indicator Boards

SIB0406	400 x 600	10/12 Names
SIB0606	600 x 600	20 Names
SIB0609	600 x 900	30 Names

* If staff names are required, please price as custom grid designs - see table, page 7.
Names can be etched on vinyl magnet.
See Accessories page for magnetic markers.

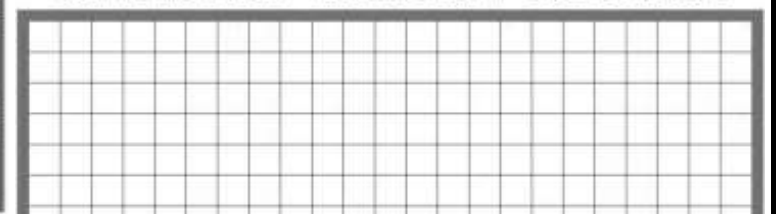
Music Boards

MB0912	900 x 1200mm	4 staves
MB1212	1200 x 1200mm	5 staves
MB12154	1200 x 1500mm	4 staves
MB1215	1200 x 1500mm	5 staves
MB1218	1200 x 1800mm	5 staves
MB1224	1200 x 2400mm	5 staves

Gridded Boards - 5cm grid

G50912	900 x 1200mm	17x23 sq.
G51212	1200 x 1200mm	23x23 sq.
G51215	1200 x 1500mm	23x29 sq.
G51218	1200 x 1800mm	23x35 sq.
G51224	1200 x 2400mm	23x47 sq.

50MM GRID BOARD 1200x1200MM 23x23 SQUARES



Prowite™ Glass Writing Boards


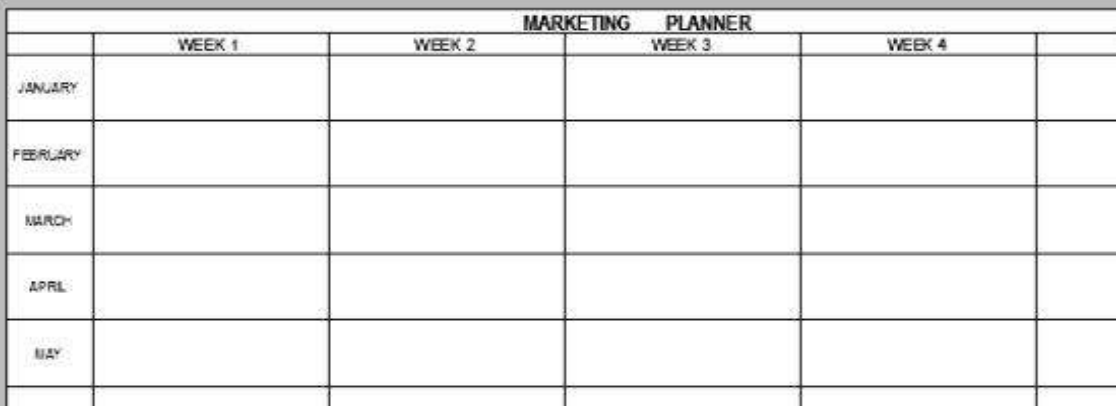
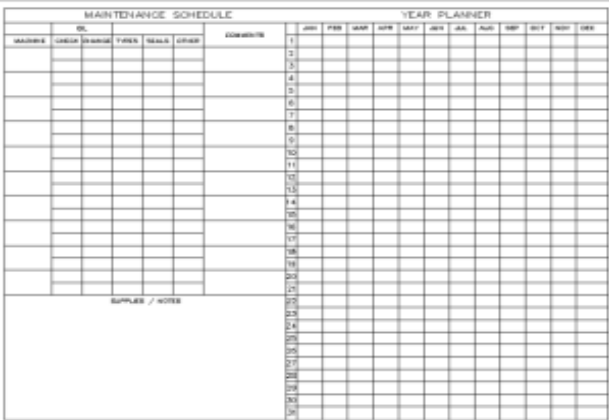
High gloss, ultra smooth, dry erase surface with frameless polished edges

Code	Size (mm)	Colour
Magnetic Glassboards - With glass pen tray, magnets & wall fixings		
GM0609W	600 x 900mm	Pure White
GM0912W	900 x 1200mm	Pure White
GM0915W	900 x 1500mm	Pure White
GM1018W	1000 x 1800mm	Pure White
GM0612B	600 x 1200mm	Gloss Black
GM1018B	1000 x 1800mm	Gloss Black
- Black Glassboards come with 4 fluoro markers		
Standard Glassboards - With chrome domes & wall fixings		
GB0609C	600 x 900mm	Clear
GB0912C	900 x 1200mm	Clear - Safety
GB0609F	600 x 900mm	Frosted
GB0912F	900 x 1200mm	Frosted - Safety
GBS4	12mm stand-off	Stainless steel set of 4

Other sizes in clear, frosted and coloured glass are available. More stock sizes arriving soon!

Laser-etched Whiteboards

Prowite™ Laser-etched Whiteboards

Standard Designs		
Code	Size (mm)	
School Term Planners		
STP0612	600 x 1200mm	1 Term, ↓
STP0912	900 x 1200mm	1 Term, ↓
STP1212	1200 x 1200mm	2 Terms
STP1224	1200 x 2400mm	4 Terms, ↔
 <p>Year/Term planners can be stretched to fit other whiteboard sizes - please enquire.</p>		
Year Planners		
YP0912	900 x 1200mm	↔ or ↓
YP0912F	900 x 1200mm	Jun-May, ↔
YP1215	1200 x 1500mm	↔
YP1218	1200 x 1800mm	↔
YP1224	1200 x 2400mm	↔
Month Planner		
MP0609	600 x 900	7 days, 5 weeks, ↔
↔ = landscape layout ↓ = portrait layout		
Marketing Year Planners		
YM0912	900 x 1200mm	60 weeks
YM1215	1200 x 1500mm	60 weeks
 <p style="text-align: right;">12 months + Notes >>></p>		
Maintenance Schedule Planner		
MS0912	900 x 1200mm	
MS1215	1200 x 1500mm	
		

These are only a sample of what you can print on to your whiteboard - please ask us for more design suggestions!


ALEX Distributors

PROWITE Projection™ Screens

PROWITE Projection™ matte white projection screens			
Code	Size	Metric Size	Ratio
Pull up Projection Screens			
FV60	60" diagonal	1.2 x 0.9 m	4:3
FV80	80" diagonal	1.6 x 1.2 m	4:3
FV100	100" diagonal	2.0 x 1.5 m	4:3
Table Projection Screens			
TSF40	40" diagonal	0.8 x 0.6 m	4:3
TSF50	50" diagonal	1.0 x 0.76 m	4:3

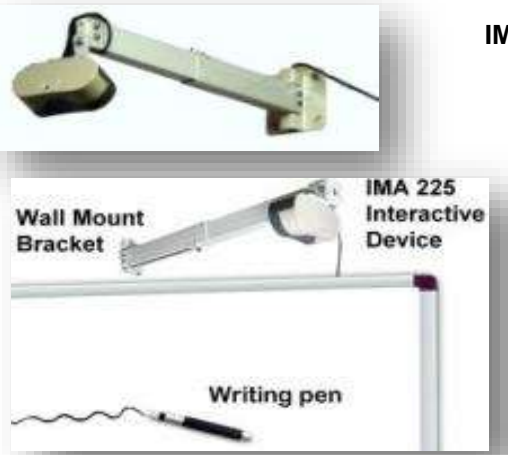
Projector Mounting

PROWITE Projection™ Ceiling mounts & Trolley to suit most projectors	
Code	Description
CM06	Ceiling mount white 135mm, adj. angle
CM01	Ceiling mount white height adj. 430-650mm, adj. angle
CM02	Ceiling mount white, height adj. 610-830mm, adj. angle
PTU01	Projector Trolley adj. height 945-1320mm, plate size 290x350mm



Prowite™ Interactive Whiteboards

Interactive device for use with existing whiteboard & projector setup		
Code	Description	Price
IMA225	Interactive Image Device	
- Includes wall mount, interactive pen, software & USB cable. - Supports Image size up to 100"		



We can also supply a full range of *Optoma™* & *HITACHI* standard & Interactive Projectors and other Interactive whiteboard systems.

Call us now for more information on any products in our range.

Phone 0508 79 79 79
 Fax 06 278 1160
 Email sales@ALEXnz.com

PROWITE Projection™ matte white projection screens

Code	Size	Metric Size	Ratio
Tripod Projection Screens			
TA S60	60 x 60"	1.5 x 1.5 m	1:1
TA S70	70 x 70"	1.8 x 1.8 m	1:1
TB S84	84 x 84"	2.1 x 2.1 m	1:1
TB S96	96 x 96"	2.4 x 2.4 m	1:1
Manual Projection Screens			
W S50	50 x 50"	1.27 x 1.27 m	1:1
W S70	70 x 70"	1.8 x 1.8 m	1:1
W S84	84 x 84"	2.1 x 2.1 m	1:1
W V90	90" diagonal	1.83 x 1.37 m	4:3
W V100	100" diagonal	2.03 x 1.52 m	4:3
W V120	120" diagonal	2.44 x 1.83 m	4:3
W V150	150" diagonal	3.05 x 2.29 m	4:3
W L84	84" diagonal	1.81 x 1.13 m	16:10
W L94	94" diagonal	2.02 x 1.27 m	16:10
W L113	113" diagonal	2.43 x 1.52 m	16:10
W L142	142" diagonal	3.06 x 1.91 m	16:10
W H80	80" diagonal	1.77 x 1.0 m	16:9
W H90	90" diagonal	2.0 x 1.12 m	16:9
W H100	100" diagonal	2.21 x 1.25 m	16:9
W H120	120" diagonal	2.66 x 1.5 m	16:9
Motorised Projection Screens			
72MEV	72" diagonal	1.46 x 1.1 m	4:3
84MEV	84" diagonal	1.71 x 1.28 m	4:3
84MEV-Remote	84" diagonal	1.71 x 1.28 m	4:3
92MEV	92" diagonal	1.87 x 1.4 m	4:3
92MEV-Remote	92" diagonal	1.87 x 1.4 m	4:3
100MEV	100" diagonal	2.03 x 1.52 m	4:3
100MEV-Remote	100" diagonal	2.03 x 1.52 m	4:3
120MEV-Remote	120" diagonal	2.44 x 1.83 m	4:3
150MEV-Remote	150" diagonal	3.05 x 2.29 m	4:3
180XEV-Remote	180" diagonal	3.66 x 2.74 m	4:3
* 200XEV-Remote	200" diagonal	4.06 x 3.05 m	4:3
* NB. 200" electric screens may be tab-tensioned style for flatter viewing.			
Wide screen			
84MLR	84" diagonal	1.81 x 1.13 m	16:10
94MLR	94" diagonal	2.02 x 1.27 m	16:10
102MLR	102" diagonal	2.2 x 1.37 m	16:10
123MLR	123" diagonal	2.65 x 1.65 m	16:10
155MLR	155" diagonal	3.33 x 2.08 m	16:10
82MHR	84" diagonal	1.8 x 1.02 m	16:9
90MHR	90" diagonal	2.0 x 1.12 m	16:9
100MHR	100" diagonal	2.21 x 1.25 m	16:9
120MHR	120" diagonal	2.66 x 1.5 m	16:9
150MHR	150" diagonal	3.33 x 1.87 m	16:9
200MHR	200" diagonal	4.43 x 2.49 m	16:9

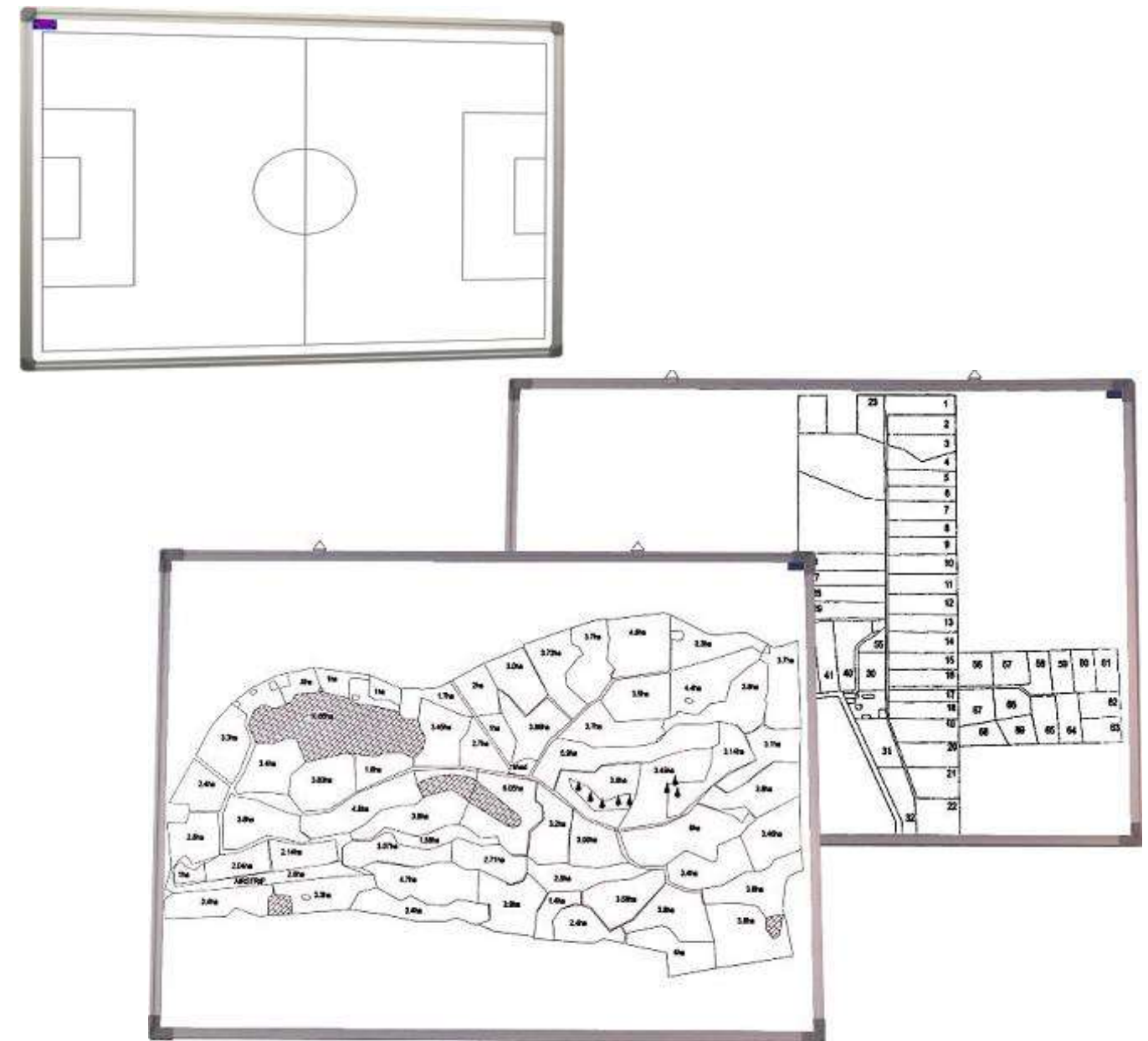
PROWITE Projection™ Screen Wall Mount Brackets

Code	Size
WB01	90mm
WB02	280-610mm

Custom/Personalised Board Designs

Code	Size (mm)	Code	Size (mm)
Grids		Maps	
PE0406G	400 x 600	PE0406M	400 x 600
PE0606G	600 x 600	PE0606M	600 x 600
PE0609G	600 x 900	PE0609M	600 x 900
PE0612G	600 x 1200	PE0612M	600 x 1200
PE0909G	900 x 900	PE0909M	900 x 900
PE0912G	900 x 1200	PE0912M	900 x 1200
PE0915G	900 x 1500	PE0915M	900 x 1500
PE0918G	900 x 1800	PE0918M	900 x 1800
PE1212G	1200 x 1200	PE1212M	1200 x 1200
PE1215G	1200 x 1500	PE1215M	1200 x 1500
PE1218G	1200 x 1800	PE1218M	1200 x 1800
PE1221G	1200 x 2100	PE1221M	1200 x 2100
PE1224G	1200 x 2400	PE1224M	1200 x 2400
PE1230G	1200 x 3000	PE1230M	1200 x 3000
PE1236G	1200 x 3600	PE1236M	1200 x 3600

*Custom laser-etched whiteboard may incur extra set-up costs depending on design. Setup fees can be deducted on multiple copies or re-runs.



These are only a sample of what you can print on to your whiteboard - please ask us for more design suggestions!

PROWITE™ & WITAX™ Flip chart easels/whiteboards and pads

Code	Size (mm)
FC0609PE	PROWITE™ 900x600mm whiteboard & pad (FC30) on adjustable Flipchart tripod easel
FC0609A	WITAX™ 700x1000mm whiteboard & pad (FC30) on adjustable Flipchart tripod easel
E90S	Tripod Easel stand only, suits boards from 600mm wide
FC0710PM	PROWITE™ 1000x700mm whiteboard & pad (FC30) on mobile adjustable Flipchart Easel
FC0710PF	PROWITE™ 1000x700mm whiteboard & pad (FC30) on folding adjustable Flipchart Easel
FC0710AM	WITAX™ 1000x700mm whiteboard & pad (FC30) on mobile adjustable Flipchart Easel
FC0710AF	WITAX™ 1000x700mm whiteboard & pad (FC30) on folding adjustable Flipchart Easel
FC30	Replacement flipchart pad, 880 x 560mm
FC30E	Economy flipchart pad, 720 x 510mm



E90S



FC0710AM & FC0710PM

FC0710AF & FC0710PF

FC0609A & FC0609PE

NEW!!

PROWITE™ Porcelain Enamel mobile whiteboards, single & double-sided

Code	Size (mm)	Configuration
M0912PE	900 x 1200	Double Sided
M1212PE	1200 x 1200	Double Sided
M1215PE	1200 x 1500	Double Sided
M1218PE	1200 x 1800	Double Sided
SM0912PE	900 x 1200	Single Sided
SM1212PE	1200 x 1200	Single Sided
SM1215PE	1200 x 1500	Single Sided
SM1218PE	1200 x 1800	Single Sided

Can be laser-etched, one or both sides

All mobile whiteboards shipped CKD to reduce freight damage and costs.

WITAX™ Acrylic Magnetic mobile whiteboards, single & double-sided

Code	Size (mm)	Configuration
M0912AC	900 x 1200	Double Sided
M1212AC	1200 x 1200	Double Sided
M1215AC	1200 x 1500	Double Sided
M1218AC	1200 x 1800	Double Sided
SM0912AC	900 x 1200	Single Sided
SM1212AC	1200 x 1200	Single Sided
SM1215AC	1200 x 1500	Single Sided
SM1218AC	1200 x 1800	Single Sided

Can be laser-etched, one or both sides

All mobile whiteboards shipped CKD to reduce freight damage and costs.

Mobile stands only, adjustable width, CKD

Code	Size (mm)
12M	1200 x 1200-1800
12MS	1200 x 900-2400

All mobile whiteboards shipped CKD to reduce freight damage and costs.

