

SmarterSurfaces™

Smarter Surfaces™

# Product Catalogue

website

[www.smartersurfaces.com](http://www.smartersurfaces.com)

[www.smartersurfacescorporate.com](http://www.smartersurfacescorporate.com)



<b>Communicator Collection (dry erase / wet erase functionality)</b> .....	<b>3</b>
➤ Smart Dry Erase Wallcovering .....	4
➤ Smart Wall Paint .....	5
➤ Smart Blackboard Paint .....	6
➤ Smart Office Film: Dry Erase (White) .....	21
➤ Smart Office Film: Dry Erase (Clear) .....	21
➤ Smart 2-in-1 Office Film: Projector and Dry Erase .....	22
<b>Connector Collection (magnetic functionality)</b> .....	<b>7</b>
➤ Smart Magnetic Wallcovering .....	8
➤ Super Magnetic Paint .....	9
➤ Smart Magnetic Plaster .....	10
➤ Smart Magnetic Paint .....	11
<b>Collaborator Collection (triple and dual functionality)</b> .....	<b>12</b>
➤ Smart 3-in-1 Wallcovering: Magnetic, Dry Erase and Projector .....	13
➤ Smart 2-in-1 Wallcovering: Magnetic and Dry Erase .....	14
➤ Smart 2-in-1 Wallcovering: Projector and Dry Erase .....	15
<b>Clarity Collection (projection functionality)</b> .....	<b>16</b>
➤ Smart Projector Paint .....	17
➤ Smart Projector Paint Pro .....	18
➤ Smart Projector Paint Contrast .....	19
<b>Base Materials</b> .....	<b>23</b>
➤ Smart Magnetic Digital Print Base .....	24
<b>Primers and Accessories</b> .....	<b>25</b>
➤ Smart Primer and Smart Sealer .....	26
➤ Cleaners (Whiteboard Cleaning Spray, Permanent Ink Remover, Smart Erasers) .....	27

## Wallcoverings

- Smart Dry Erase Wallcovering ..... 4
- Smart Magnetic Wallcovering ..... 8
- Smart 2-in-1 Wallcovering: Magnetic and Dry Erase ..... 14
- Smart 2-in-1 Wallcovering: Projector and Dry Erase ..... 15
- Smart 3-in-1 Wallcovering: Magnetic, Dry Erase and Projector ..... 13

## Films

- Smart Office Film: Dry Erase (White) ..... 21
- Smart Office Film: Dry Erase (Clear) ..... 21
- Smart 2-in-1 Office Film: Projector and Dry Erase ..... 22

## Paints and Plaster

- Smart Magnetic Plaster..... 10
- Super Magnetic Paint..... 9
- Smart Magnetic Paint..... 11
- Smart Wall Paint (Whiteboard Paint) ..... 5
- Smart Projector Paint Pro (White)..... 18
- Smart Projector Paint (White)..... 17
- Smart Projector Paint Contrast (Grey)..... 19
- Smart Blackboard Paint ..... 6

## Base Materials

- Smart Magnetic Digital Print Base ..... 24

## Primers and Accessories

- Smart Primer and Smart Sealer ..... 26
- Cleaners (Whiteboard Cleaning Spray, Permanent Ink Remover, Smart Erasers) ..... 27

# Smart Dry Erase Wallcovering

## Description:

Smart Dry Erase Wallcovering allows you to turn any wall into a dry erase surface in just one easy application. Simply hang like any commercial wallcovering and use like a whiteboard.

## Coverage / Dimensions / Weight:

10m<sup>2</sup> (107 ft<sup>2</sup>) / 1.22m x 8.25m / 5kg

## Finish:

White

## Advantages:

- Top performing commercial grade dry erase wallcovering
- No ghosting
- Ideal for creating large dry erase areas with a perfectly smooth finish
- Can be hung vertically, horizontally and even on curved walls
- Quick and easy to install. Ready to use in 24 hours
- 10 year performance guarantee

## Suitable for:

Meeting rooms, offices, classrooms, brainstorming areas, hotels, conference centres etc.

## Uses:

Brainstorming, planning, project management, presentations, noticeboards, taking meeting notes...any time you would use flip chart paper or a whiteboard.

-  Certified for classification of reaction to fire  
Euroclass B and ASTM E84





# Smart Wall Paint

## 📄 Description:

Smart Wall Paint is our award-winning one-coat whiteboard paint that turns any smooth surface into a write-on wipe-off dry erase whiteboard area.

## 🚩 Finish:

Choose Smart Wall Paint White for a traditional white finish.  
Choose Smart Wall Paint Clear for a dry erase surface in any colour.

## 🌀 Coverage / 📦 Weight:

6m<sup>2</sup> (65 ft<sup>2</sup>) / 1.5kg

## ☆ Advantages:

- Low odour, low VOC, Leed Certified, Euroclass Fire Safety Level: B, M1 Certification, Indoor Air Quality Certification
- FM Office Product of the year 2014
- Made in Europe
- Can be applied over magnetic paint or plaster
- 10 year performance guarantee

## 👍 Suitable for:

Meeting rooms, offices, desks, classrooms, schools, universities, brainstorming areas, hotels and much more.

## ☰ Uses:

Brainstorming, planning, designing, reviewing, visualising, collaborating, project management.



# Smart Blackboard Paint

## Description:

Smart Blackboard Paint allows you to create a blackboard area on any smooth non-porous surface including drywall, wood, plaster and metal.

## Coverage / Volume:

Available in 4m<sup>2</sup> (43ft<sup>2</sup>) / 750ml

## Weight / Finish:

1.24kg / Matt Black

## Advantages:

- Quality: Commercial grade product, manufactured in Europe
- Low odour: no smell, no fumes
- Can be applied in your office or school or home
- Child friendly
- Can be applied over magnetic paint or plaster

## Suitable for:

Classrooms, restaurants, offices, home office, playrooms, walls, desks, doors and more.

## Uses:

Menu boards, teaching aids, brainstorming, noticeboards.



# Smart Magnetic Wallcovering

## 📄 Description:

Smart Magnetic Wallcovering is a high performance commercial grade wallcovering that allows you to transform walls into magnetic spaces.

## 🌀 Coverage / ✂ Dimensions / 📦 Weight:

10m<sup>2</sup> (107 ft<sup>2</sup>) / 1.22m x 8.25m / 15kg

## 🚩 Finish:

White

## ☆ Advantages:

- Quick and easy to install. Ready to use in 48 hours.
- Strong magnetic strength
- 10 year performance guarantee
- Gives a smooth finish
- Topcoat with any surface finish: paint, digital print or Smart Wall Paint for a magnetic writable surface

## 👍 Suitable for:

Small, medium and large businesses, conference facilities, meeting rooms, reception, hotels, home offices etc.

## ☰ Uses:

Planning, scheduling, project management, brainstorming, mood boards, notice boards, hanging photos and much more.

- 📌 Certified for classification of reaction to fire Euroclass B and ASTM E84



# Super Magnetic Paint

## 📄 Description:

Super Magnetic Paint is a super strength magnetic paint that can be applied with a roller or brush. It will create a very strong magnetically receptive surface.

Topcoat with any colour paint, wallcovering or digital print. Alternatively, add dry erase functionality by topcoating with our award-winning whiteboard paint, Smart Wall Paint.



## 🌀 Coverage / 📦 Weight / 🚩 Finish:

5m<sup>2</sup> (53ft<sup>2</sup>) / 6kg / Grey

## ☆ Advantages:

- Extremely high performance
- Magnetic surface will hold a lot of weight
- Create a finish in the colour or design of your choice
- Use at work, school or home
- 10 year performance guarantee

## 👍 Suitable for:

Offices, classrooms, meeting rooms, reception and common areas, home offices and more.

## ☰ Uses:

Project management, planning, scheduling, noticeboards.

## 🔗 Compatability:

Use with neo-dymium magnets only.



# Smart Magnetic Plaster

## 📄 Description:

Smart Magnetic Plaster is a pre-mixed high performance commercial grade plaster that allows you to transform walls into magnetic spaces.

## 🌀 Coverage / 📦 Weight / 🚩 Finish:

5m<sup>2</sup> (53ft<sup>2</sup>) / 10kg / Dark Grey

## ★ Advantages:

- Very strong magnetic pull: 67% magnetite content
- Quick and easy to install- just like standard plaster
- Particularly suitable for poor surface conditions
- Accommodates any colour
- Create large magnetic surfaces without the use of metal sheets
- Digital prints and wallcoverings can easily be applied on top
- 10 year performance guarantee

## 👍 Suitable for:

Small, medium and large businesses, conference facilities, meeting rooms, reception, hotels and restaurants etc.

## ☰ Uses:

Planning, scheduling, project management, brainstorming, mood boards, notice boards, displaying photos and much more.



# Smart Magnetic Paint

## 📄 Description:

Smart Magnetic Paint is a high performance paint that allows you to create a magnetic surface in mid-grey. Designed to be used with neodymium magnets, top coat in the colour of your choice to create a magnetic surface in any colour.

## 🌀 Coverage / 📦 Weight / 🚩 Finish:

3m<sup>2</sup> and 10m<sup>2</sup> (32ft<sup>2</sup> and 107ft<sup>2</sup>) / 1.9kg and 6kg / Mid Grey

## ☆ Advantages:

- Low odour and eco friendly
- Ready to use in just 24 hours
- High magnetite content
- Made in Europe
- 10 year performance guarantee

## 👍 Suitable for:

Offices, classrooms, meeting rooms, receptions and common areas, home offices and more.

## ☰ Uses:

Project management, planning, scheduling, noticeboards and lots more.



## Smart 3-in-1 **Wallcovering**: Magnetic, Dry Erase and Projector

SmarterSurfaces™

### **Description:**

Get triple functionality with this state-of-the-art functional wallcovering. This truly innovative product gives you all the advantages of a projector screen and a magnetic and dry erase surface. Project onto, stick onto, write-on wipe-off.

### **Coverage / ✂ Dimensions / 📦 Weight:**

10m<sup>2</sup> (107 ft<sup>2</sup>) / 1.22m x 8.25m / 15kg

This is a commercial grade product which requires professional installation.

### **Finish:**

Low Sheen White

### **Advantages:**

- Ready to use in 48 hours
- Rapid installation
- Works with all quality dry erase markers and cleaners, neodymium or rare-earth magnets and most projectors
- Get triple functionality in one product
- Acts as a magnetic board, whiteboard and projector screen
- 10 year performance guarantee

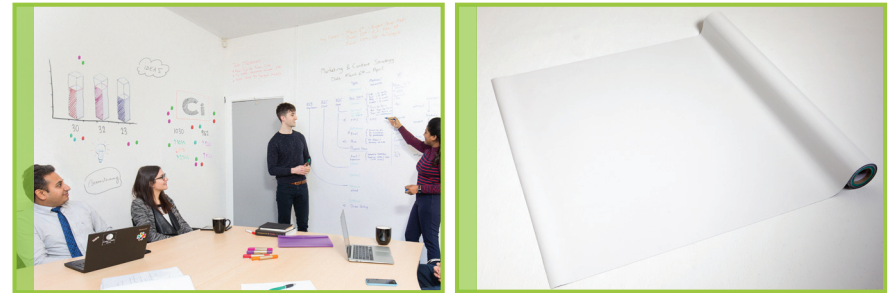
### **Suitable for:**

All working and learning spaces.

### **Uses:**

Anywhere you would use a projector, a whiteboard or a magnetic panel.

-  Certified for classification of reaction to fire Euroclass B and ASTM E84



# Smart 2-in-1 Wallcovering: Magnetic and Dry Erase

SmarterSurfaces™

## 📄 Description:

This dual functionality wallcovering gives a surface that is both magnetic and dry erase. Available in white only.

## 🌀 Coverage / ✂ Dimensions / 📦 Weight:

10m<sup>2</sup> (107 ft<sup>2</sup>) / 1.22m x 8.25m / 15kg

This is a commercial grade product which requires professional installation.

## 🚩 Finish:

Gloss White

## ☆ Advantages:

- Commercial grade product
- Rapid installation
- Ready to use in 48 hours
- Very smooth finish
- Eliminate hanging whiteboards and magnetic panels
- 10 year guarantee

## 👍 Suitable for:

Offices, meeting rooms, classrooms, brainstorming areas, hotels, conference centres, gyms, leisure facilities and much more.

## ☰ Uses:

Project management, planning, scheduling, brainstorming, mindmapping, mood boards, notice boards, presentations, tracking progress and much more.

- 📌 Certified for classification of reaction to fire  
Euroclass B and ASTM E84



# Smart 2-in-1 Wallcovering: Projector and Dry Erase

SmarterSurfaces™

## 📄 Description:

This dual functionality wallcovering gives all the benefits of a dry erase and projection surface. It's low-sheen finish reduces hot spots, making it the ideal solution for interactive presentations.

## 🌀 Coverage / ✂ Dimensions / 📦 Weight:

10m<sup>2</sup> (107 ft<sup>2</sup>) / 1.22m x 8.25m / 5.7kg

## 🚩 Finish:

Low Sheen White

## ☆ Advantages:

- Can be used with most projectors
- Reduces hotspotting
- Can be applied over Smart Magnetic Plaster for triple functionality
- Quick and easy to install using normal ready mix adhesive
- Performs just like a whiteboard and / or projector screen
- Can be hung vertically, horizontally and even on curved walls
- 10 year performance guarantee

## 👍 Suitable for:

Small, medium and large businesses, meeting rooms, conference rooms, hotels, convention centres, schools, universities, training facilities, gyms and leisure facilities etc.

## ☰ Uses:

Presentations, displays, videos, teaching aids, planning, demonstrations and more.

- 📌 Certified for classification of reaction to fire Euroclass B and ASTM E84





# Smart Vinyl over Vinyl Wallpaper Adhesive

Smart Vinyl over Vinyl Wallpaper Adhesive is a high performing ready mixed wallpaper paste that has been formulated to be used with all Smarter Surfaces functional wallpapers.

Suitable for vinyls, overlapping and sticking to gloss surfaces, Smart Vinyl Wallpaper Adhesive can be used with any wallpaper that requires a high strength adhesive. Simply apply one light coat before applying your wallpaper to the wall and add additional adhesive where necessary.

Please note it is essential to use a vinyl over vinyl adhesive, like this one, with all the magnetic wallpapers in our range.

Read or download our step-by-step Application Guide [here](#).





# Smart Projector **Paint Pro** (White) (non dry erase)

**SmarterSurfaces™**

## **Description:**

Smart Projector Paint Pro allows you to transform any smooth paintable surface into a high performance projector screen. Smart Projector Paint Pro facilitates the projection of bright, sharp images in high definition. It has been designed and tested to provide maximum projection surface performance.



 **Coverage /  Weight:**  
6m<sup>2</sup> (65ft<sup>2</sup>) / 1.05kg

 **Finish:**  
White

## **Advantages:**

- Use on plaster, wallboards, wood, metal and concrete. For interior use only
- Works with all projectors
- Declutter your workspace
- Low odour and low VOC
- Eliminates hotspots
- An always-on projection screen

## **Suitable for:**

Small, medium and large businesses, meeting rooms, conference rooms, hotels, convention centres, schools, universities etc.

## **Uses:**

Presentations, teaching, training, gaming.

# Smart Projector **Paint Contrast** (Grey)

## **Description:**

Smart Projector Paint Contrast allows you to transform any smooth paintable surface into a high performance projector screen in a dark grey finish for extra stand-out. This is a two part product comprising a base coat and a top coat.

Smart Projector Paint Contrast facilitates the projection of bright, sharp images in high definition. It has been designed and tested to provide maximum contrast.

## **Coverage / Weight:**

6m<sup>2</sup> (65ft<sup>2</sup>) /1kg per tin

## **Finish:**

Dark Grey

## **Advantages:**

- Use on plaster, wallboards, wood, metal and concrete. For interior use only.
- Works with all projectors
- Declutter your workspace
- Low odour and low VOC
- Eliminates hotspots
- An always-on projection screen

## **Suitable for:**

Small, medium and large businesses, meeting rooms, conference rooms, hotels, convention centres, schools, universities, movie theatres etc.

## **Uses:**

Presentations, teaching, training, gaming.



# Smart Office Film: Dry Erase (white / clear versions)

## 📄 Description:

This is a commercial self-adhesive film designed to transform any smooth surface into a writable area.

## 🌀 Coverage / ✂ Dimensions / 📦 Weight:

10m<sup>2</sup> (107 ft<sup>2</sup>) / 1.22m x 8.25m / 6kg

## ☆ Advantages:

- Eliminate the need for traditional boards
- Create multiple write-on wipe-off surfaces throughout your workspace
- Make the most of your existing furniture and surfaces
- Refurbish old whiteboard surfaces
- Improve collaboration and productivity
- No ghosting

## 📄 Self-Adhesive?:

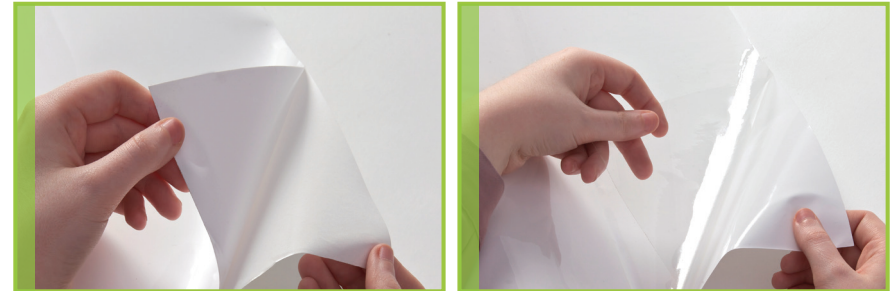
Yes

## ☰ Uses:

Apply on panels, partitions, desks, doors, lockers - any smooth indoor surface.

## 🚩 Finish:

Gloss



## 🖋 Colour:

White or Clear

Choose white for a classic white finish. Choose clear to retain the original base pattern, finish, colour or design.

## ↓ Installation:

- Rapid application
- Immediate use
- No odour or mess

## 🔗 Compatability:

Use with all quality dry erase markers and cleaners (available from Smarter Surfaces).

# Smart 2-in-1 Office Film: Projector and Dry Erase

SmarterSurfaces™

## **Description:**

Transform any smooth surface into a writable and projection area with this self-adhesive film.

## **Coverage / ✂ Dimensions / 📦 Weight:**

10m<sup>2</sup> (107 ft<sup>2</sup>) / 1.22m x 8.25m / 6kg

## **Advantages:**

- Eliminate the need for traditional boards and screens
- Declutter and modernise your workspace
- Make the most of your existing surroundings
- Refurbish old whiteboard surfaces and projector screens
- Works with most projectors
- Easy to trim

## **Self-Adhesive?:**

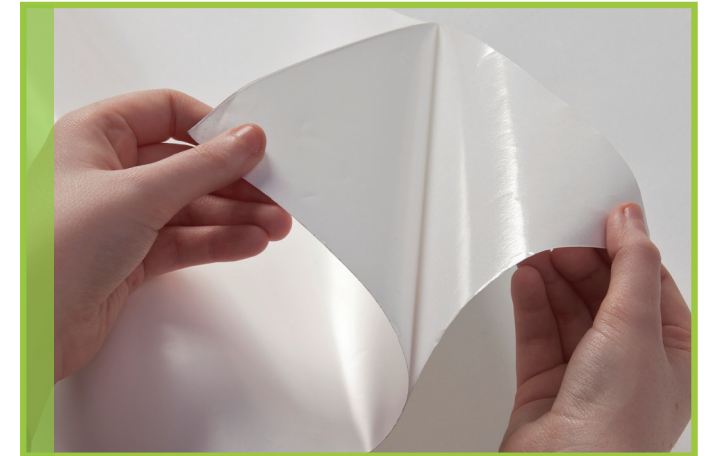
Yes

## **Uses:**

Apply to furniture, walls, panels, partitions, glass, doors or any smooth surface.

## **Finish:**

Low Sheen



## **Colour:** White

## **Installation:**

- Rapid application
- Immediate use
- No odour or mess

## **Compatibility:**

Use with all quality dry erase markers and cleaners (available from Smarter Surfaces).



# Smart Primer and Smart Sealer



## 📄 Description:

Smart Primer is specially formulated to work as a base for Smart Wall Paint White. It has a high pigment content which is essential for eliminating uneven and strongly coloured bases.

## 🌀 Coverage:

Covers an area of 6m<sup>2</sup> / 65 ft<sup>2</sup>

## 📦 Weight:

1.22kg

## ☆ Advantages:

- Low odour
- Sticks to all surfaces without sanding
- Great for drywall, wood and plastics
- Covers deep colours and stains

## ☰ Uses:

Designed for use as a base coat for Smart Wall Paint White and Smart Projector Paint , and as a top coat for Smart Magnetic Paint, Smart Magnetic Wallcovering and Smart Magnetic Plaster.

## 📄 Description:

Smart Sealer is specially formulated to prime and seal porous and new surfaces ready for Smart Wall Paint Clear.

## 🌀 Coverage:

Available in 6m<sup>2</sup> (65ft<sup>2</sup>) in two coats

## 📦 Weight:

0.9kg

## ☆ Advantages:

- Clear finish, allowing you to choose any colour or finish
- Low odour
- Sticks to all surfaces without sanding
- Great for drywall, wood, wallpaper and other dry or absorbent surfaces

## ☰ Uses:

Designed for use as a base coat for Smart Wall Paint Clear