

# Installation instructions for PROWITE™ & WITAX™ whiteboards.

## Step 1

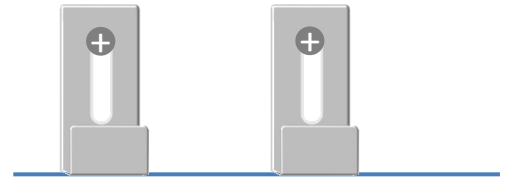
Determine where the whiteboard will be installed. Draw a line using a spirit level where the bottom edge will sit.



## Step 2

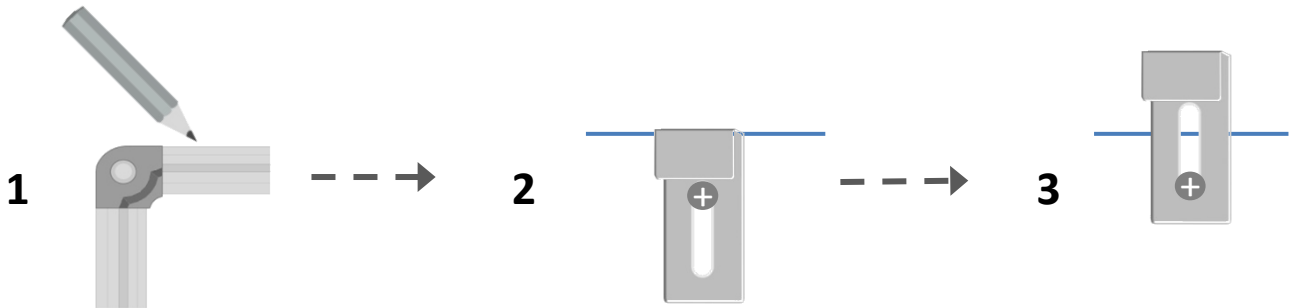
(Only necessary for large boards, 1500mm & up.)

Screw two or three brackets to the wall so that the bottom edge will sit on the line drawn in Step 1. These should be positioned where there is good solid fixing.



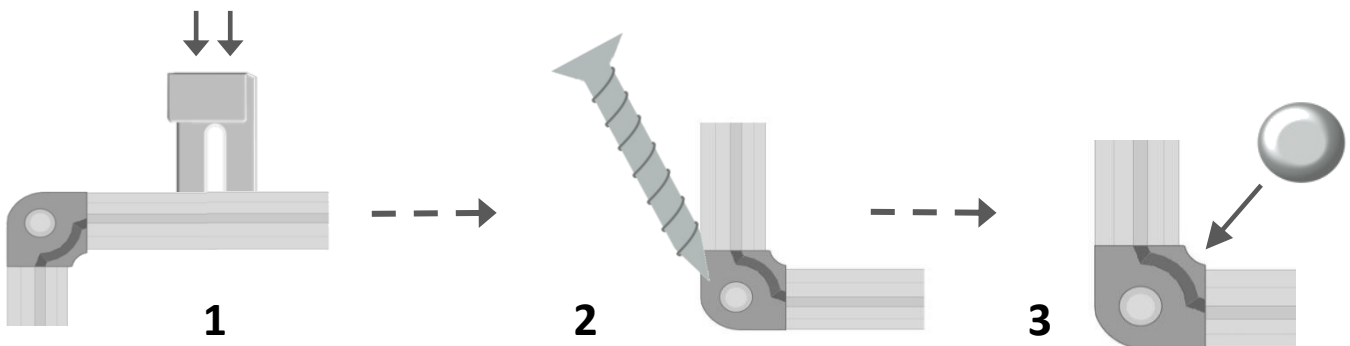
## Step 3

Sit the board in the brackets and mark where the top of the board will sit. Remove the board and screw remaining brackets, up the other way, until flat on the wall, so the top of the bracket sits on the line marked. Slide brackets up.



## Step 4

Sit the board in the bottom brackets, slide top brackets down. Screw the whiteboard to the wall through all four corners and fit the caps over the holes.



## Step 5

Slide the pen tray into the channel in the frame, at the bottom of the board.

